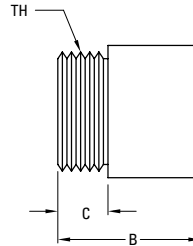
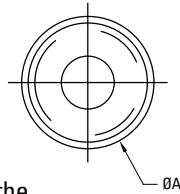
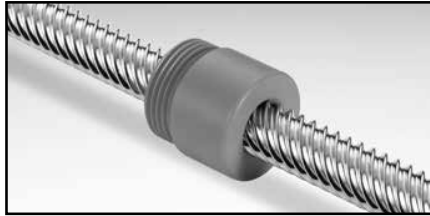




Thread Mount Supernuts®

SN



Flanges

3/16" to 1/4"	F25
5/16" to 10 mm	F37
7/16" to 16 mm	F50
3/4" to 1"	F75
1-1/4"	F100
1-1/2"	R54-3

Dimensions available on page 35 or online.

Our standard SN nuts have proven themselves for the past twenty years. Available in sizes from 3/16" to 1-1/2" with or without mounting flanges.

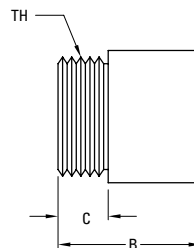
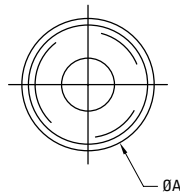
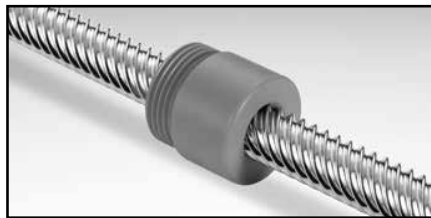
SN - 3/16" to 7/16" Diameter*

Dia.	Lead	Part No.	Supernut® Dimensions				Design Load	Max. Static Load	Efficiency %	Flange
			A	B	C	TH				
3/16"	0.050	SN1820X	0.625	0.500	0.187	9/16-18	30 lbs	150 lbs	49	F25
	0.100	SN2-1820							66	
	0.125	SN3-1824X							70	
	0.200	SN4-1820							77	
	0.375	SN8-1821							81	
	0.400	SN8-1820							82	
6 mm	0.500	SN10-1820	0.625	0.500	0.187	9/16-18	30 lbs	150 lbs	82	F25
	1 mm	SN6x1M							37	
1/4"	0.031	SN2532X	0.625	0.500	0.187	9/16-18	45 lbs	225 lbs	30	F25
	0.050	SN2520X							41	
	0.063	SN2516X							48	
	2mm	SN2-25x1M							53	
	3mm	SN3-25x1M							62	
	0.125	SN2-2516X							64	
	0.200	SN4-2520X							72	
	0.250	SN4-2516X							76	
	0.500	SN7-2514X							81	
	0.750	SN12-2516							82	
5/16"	0.083	SN3112X	0.750	0.750	0.250	5/8-18	70 lbs	350 lbs	49	F37
	0.167	SN2-3112X							65	
	0.250	SN2-3108X							72	
	0.500	SN4-3108X							80	
	1.000	SN8-3108X							81	
3/8"	0.050	SN3720X	0.750	0.750	0.250	5/8-18	70 lbs	350 lbs	32	F37
	0.063	SN3716X							36	
	2 mm	SN37x2M							42	
	0.083	SN3712X							44	
	0.100	SN3710X							49	
	0.125	SN3708X							53	
	0.167	SN2-3712X							60	
	0.200	SN2-3710X							65	
	0.250	SN2-3708X							68	
	0.300	SN3-3710X							73	
	0.375	SN4-3711X							75	
	0.500	SN4-3708X							79	
	0.750	SN6-3708							82	
	1.000	SN5-3705X							82	
1.200	SN5-3704X	82								
10 mm	2 mm	SN10x2M	0.750	0.750	0.250	5/8-18	70 lbs	350 lbs	41	F37
	3 mm	SN10x3M							53	
	4 mm	SN2-10x2M							59	
	5 mm	SN2-10x2.5M							64	
	6 mm	SN4-10x1.5M							67	
	10 mm	SN5-10x2M							76	
	12 mm	SN5-10x2.4M							78	
	20 mm	SN6-10x3.3M							67	
7/16"	0.125	SN2-4316X	1.000	1.000	0.375	15/16-16	100 lbs	500 lbs	55	F50
	0.250	SN2-4308X							65	
	0.500	SN4-4308X							76	

* For all sizes shown on this page Drag Torque = Free Wheeling

Thread Mount Supernuts®

SN



Flanges

3/16" to 1/4"	F25
5/16" to 10 mm	F37
7/16" to 16 mm	F50
3/4" to 1"	F75
1-1/4"	F100
1-1/2"	R54-3

Dimensions available on page 35 or online.

SN

1/2" (12 mm) to 5/8" (16 mm) Diameter*

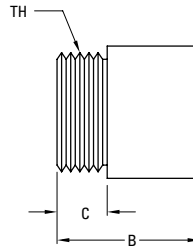
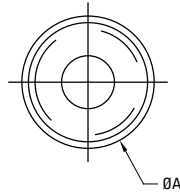
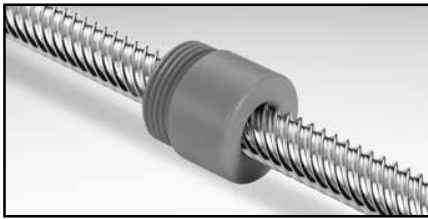
Dia.	Lead	Part No.	Supernut® Dimensions				Design Load	Max. Static Load	Efficiency %	Flange
			A	B	C	TH				
12 mm	3 mm	SN12x3M	1.000	1.000	0.375	15/16-16	100 lbs	500 lbs	48	F50
	4 mm	SN2-12x2M							54	
	5 mm	SN2-12x2.5M							59	
	6 mm	SN3-12x2M							63	
	10 mm	SN4-12x2.5M							73	
	15 mm	SN6-12x2.5M							78	
	25 mm	SN10-12x2.5M							82	
1/2"	0.0625	SN5016X	1.000	1.000	0.375	15/16-16	150 lbs	750 lbs	30	F50
	0.100	SN5010X							41	
	4mm	SN2-50x2M							52	
	0.200	SN2-5010X							57	
	0.250	SN2-5008X							62	
	0.500	SN4-5008X							75	
	0.800	SN8-5010X							80	
	1.000	SN8-5008X							81	
1.500	SN12-5008X	82								
5/8"	0.100	SN6210X	1.000	1.000	0.375	15/16-16	160 lbs	800 lbs	35	F50
	0.125	SN6208X							40	
	0.200	SN2-6210X							51	
	0.250	SN2-6208X							57	
	0.500	SN4-6208X							71	
16 mm	4 mm	SN16x4M	1.000	1.000	0.375	15/16-16	160 lbs	800 lbs	47	F50
	5 mm	SN2-16x2.5M							52	
	8 mm	SN4-16x2M							63	
	16 mm	SN7-16x2.3M							75	
	25 mm	SN5-16x5M							80	
	35 mm	SN7-16x5M							82	

* For all sizes shown on this page Drag Torque = Free Wheeling



Thread Mount Supernuts®

SN



Flanges

3/16" to 1/4"	F25
5/16" to 10 mm	F37
7/16" to 16 mm	F50
3/4" to 1"	F75
1-1/4"	F100
1-1/2"	R54-3

Dimensions available on page 32 or online.

SN
3/4" to 1 1/2" Diameter*

Dia.	Lead	Part No.	Supernut® Dimensions				Design Load	Max. Static Load	Efficiency %	Flange
			A	B	C	TH				
3/4"	0.100	SN7510X	1.500	1.500	0.500	1 3/8-16	300 lbs	1500 lbs	31	F75
	0.125	SN7508X							36	
	0.167	SN7506X							44	
	0.200	SN7505X							49	
	0.500	SN5-7510X							69	
	1.000	SN8-7508X							79	
	1.500	SN12-7508X							81	
	2.000	SN10-7505X							82	
20 mm	4 mm	SN20x4M	1.500	1.500	0.500	1 3/8-16	300 lbs	1500 lbs	41	F75
	8 mm	SN2-20x4M							59	
	12 mm	SN3-20x4M							67	
	16 mm	SN4-20x4M							72	
	20 mm	SN5-20x4M							76	
	45 mm	SN9-20x5M							82	
	50 mm	SN10-20x5M							82	
24 mm	5 mm	SN24x5M	1.500	1.500	0.500	1 3/8-16	300 lbs	1500 lbs	42	F75
1"	0.100	SN1010X	1.500	1.500	0.500	1 3/8-16	400 lbs	2000 lbs	25	F75
	0.125	SN1008X							29	
	0.200	SN1005X							41	
	0.250	SN2-1008X							46	
	0.250	SN1004X							47	
	0.500	SN5-1010X							61	
	1.000	SN10-1010X							74	
1 1/4"	0.200	SN1205X	2.000	2.000	0.600	1 9/16-18	400 lbs	2000 lbs	35	F100
	0.200	SN2-1210X							35	
	0.250	SN1204X							41	
1 1/2"	0.200	SN1505X	2.000	2.500	0.530	1.967-18	400 lbs	2000 lbs	31	R54-3
	0.250	SN1504X							36	
	0.375	SN1503X							47	
	0.500	SN2-1504X							52	

* For all sizes shown on this page Drag Torque = Free Wheeling